



**India Meteorological Department
(Ministry of Earth Sciences)**

NATIONAL BULLETIN NO. 10 (ARB/03/2022)

TIME OF ISSUE: 1245 HOURS IST

DATED: 16.12.2022

FROM: INDIA METEOROLOGICAL DEPARTMENT (FAX NO. 24643965/24699216/24623220)

**TO: CONTROL ROOM, NDM, MINISTRY OF HOME AFFAIRS (FAX.NO. 23093750)
CONTROL ROOM NDMA (FAX.NO. 26701729)
CABINET SECRETARIAT (FAX.NO.23012284, 23018638)
PS TO HON'BLE MINISTER FOR S & T AND EARTH SCIENCES (FAX NO.23316745)
SECRETARY, MOES (FAX NO. 24629777)
H.Q. (INTEGRATED DEFENCE STAFF AND CDS) (FAX NO. 23005137/23005147)
DIRECTOR GENERAL, DOORDARSHAN (23385843)
DIRECTOR GENERAL, AIR (23421105, 23421219)
PIB MOES (FAX NO. 23389042)
UNI (FAX NO. 23355841)
D.G. NATIONAL DISASTER RESPONSE FORCE (NDRF) (FAX NO. 26105912, 2436 3260)
DIRECTOR, PUNCTUALITY, INDIAN RAILWAYS (FAX NO. 23388503)
CHIEF SECRETARY, GUJARAT (FAX NO. 079-23250305)
CHIEF SECRETARY, DAMAN & DIU (FAX NO. 0260-2230775)
CHIEF SECRETARY, DADRA & NAGAR HAVELI (FAX NO. 0260-2645466)
CHIEF SECRETARY, GOA (FAX NO. 0832-2415201)
CHIEF SECRETARY, MAHARASHTRA (FAX NO. 022- 22028594)
CHIEF SECRETARY, KARNATAKA (FAX NO. 080-22258913)
CHIEF SECRETARY, KERALA (FAX NO. 0471-2327176)
ADMINISTRATOR, LAKSHADWEEP ISLANDS (FAX NO. 0413-262184)
CHIEF SECRETARY, ANDHRA PRADESH (FAX NO. 0863-2441029, 08645-246600)
CHIEF SECRETARY, TAMIL NADU (FAX NO 044-25672304)
CHIEF SECRETARY, PUDUCHERRY (FAX NO 0413-2334145)
CHIEF SECRETARY, GOVT. OF GUJARAT (FAX NO. 079-23250305)
ADMINISTRATOR, ANDAMAN & NICOBAR ISLANDS (FAX NO. 03192- 232656)**

**Sub: (A) Deep Depression over Eastcentral & adjoining Westcentral Arabian Sea
(B) Low pressure area over Southeast Bay of Bengal & adjoining areas of East
Equatorial Indian Ocean**

(A) Deep Depression over Eastcentral & adjoining Westcentral Arabian Sea

Deep Depression over Eastcentral & adjoining Westcentral Arabian Sea moved west-southwestwards with a speed of 13 kmph during past 06 hours and lay centered at 0830 hrs IST of today, the 16th December 2022 over the same region near latitude 13.9N and longitude 64.7E about 930 km west-northwest of Aminidivi (Lakshadweep), 1000 km west-southwest of Panjim (Goa) and 1190 km east-southeast of Salalah (Oman).

It is very likely to move west-southwestwards and weaken gradually into a Depression around today evening and further into a well marked low pressure area by 17th December evening.

Forecast Track and Intensity:

Date/Time(IST)	Forecast Lead Period	Position (Lat. °N/ long. °E)	Maximum sustained surface wind speed (kmph)	Category of cyclonic disturbance
15.12.22/0830	00	13.9/64.7	50-60 gusting to 70	Deep Depression
16.12.22/1730	09	13.7/63.7	45-55 gusting to 65	Depression
17.12.22/0530	21	13.5/62.3	40-50 gusting to 60	Depression
17.12.22/1730	33	13.2/60.6	25-35 gusting to 45	Well marked Low

Warnings:

(i) **Heavy Rainfall warning: No warning** as the deep depression is moving away from India coast.

(ii) **Wind warning (warning graphics enclosed):**

- **Eastcentral Arabian Sea: Squally weather with wind speed reaching 50-60 kmph gusting to 70 kmph** is prevailing around the system center and is likely to decrease gradually becoming 45-55 kmph gusting to 65 kmph by 16th evening. It will gradually decrease further becoming 35-45 kmph gusting to 55 kmph by 17th morning.
- **Westcentral Arabian Sea: Squally weather with wind speed reaching 50-60 kmph gusting to 70 kmph** is prevailing over Westcentral Arabian Sea. It is likely to continue till 16th December evening. It will decrease gradually thereafter becoming 40-50 kmph gusting to 60 kmph by 17th morning and decrease thereafter.
- **Southwest Arabian Sea: Squally weather with wind speed reaching 50-60 kmph gusting to 55 kmph** is prevailing over the adjoining Southeast Arabian Sea region and is likely to become 45-55 kmph gusting to 65 kmph during 16th evening to 17th December morning. It will gradually decrease thereafter.

(iii) **Sea Condition**

- ❖ **Eastcentral Arabian Sea: Sea Condition** is likely to be rough to very rough till 17th morning and improve thereafter.
- ❖ **Westcentral Arabian Sea: Sea Condition** is likely to be rough to very rough till 17th December evening and improve thereafter.
- ❖ **Southwest Arabian Sea: Sea Condition** is likely to be rough to very rough till 17th December evening and improve thereafter.

(iv) **Fishermen Warning:**

Fishermen are advised not to venture into

- ❖ **Eastcentral Arabian Sea** till morning of 17th December.
- ❖ **Westcentral & Southwest Arabian Sea** till 17th December.

(B) **Low pressure area over Southeast Bay of Bengal & adjoining East Equatorial Indian Ocean**

The **Low Pressure Area** over Southeast Bay of Bengal & adjoining East Equatorial Indian Ocean persists over the same region at 0830 hours IST of today, the 16th December. It is likely to move westwards and maintain its intensity over South Bay of Bengal till morning of 17th December 2022.

Warnings:

(i) Heavy Rainfall Warning:

Light to moderate rainfall at many places with heavy rainfall at isolated places is very likely over Nicobar Islands on 16th December, 2022.

(ii) Wind warning:

- ❖ **Squally weather with wind speed reaching 35-45 kmph gusting to 55 kmph** is very likely over south Andaman Sea till morning of 17th December.
- ❖ **Squally wind speed reaching 35-45 kmph gusting to 55 kmph** is likely over Southeast Bay of Bengal till morning of 17th December.
- ❖ **Squally wind speed reaching 35-45 kmph gusting to 55 kmph** is likely to prevail over Southwest Bay of Bengal on 16th and 17th December

(iii) Sea condition: Sea condition is likely to be rough over

- ❖ South Andaman Sea till morning of 17th December.
- ❖ Southeast Bay of Bengal till morning of 17th December.
- ❖ Southwest Bay of Bengal on 16th and 17th December.

(iv) Fishermen Warning (warning graphics enclosed)

Fishermen are advised not to venture into:

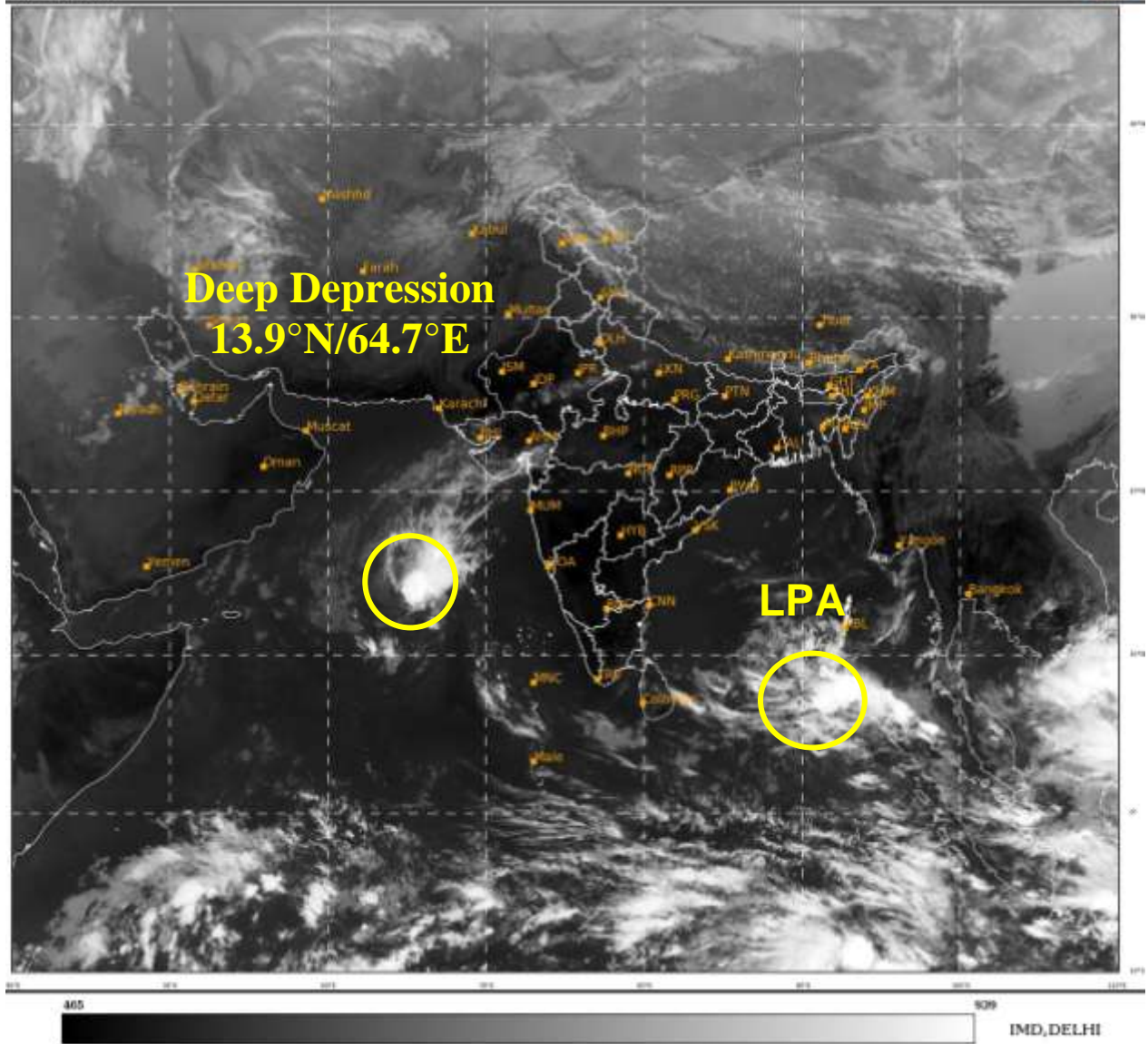
- ❖ South Andaman Sea till morning of 17th December.
- ❖ Southeast Bay of Bengal till morning of 17th December.
- ❖ Southwest Bay of Bengal on 16th and 17th December.

Both the systems are under continuous surveillance and the next message will be issued at 1430 hours IST of 16th December, 2022.

(Ananda Kumar Das)
Scientist E, Cyclone Warning Division, New Delhi

Copy to: ACWC Mumbai/ ACWC Chennai/ /CWC Ahmedabad/ CWC Thiruvananthapuram/MC Goa

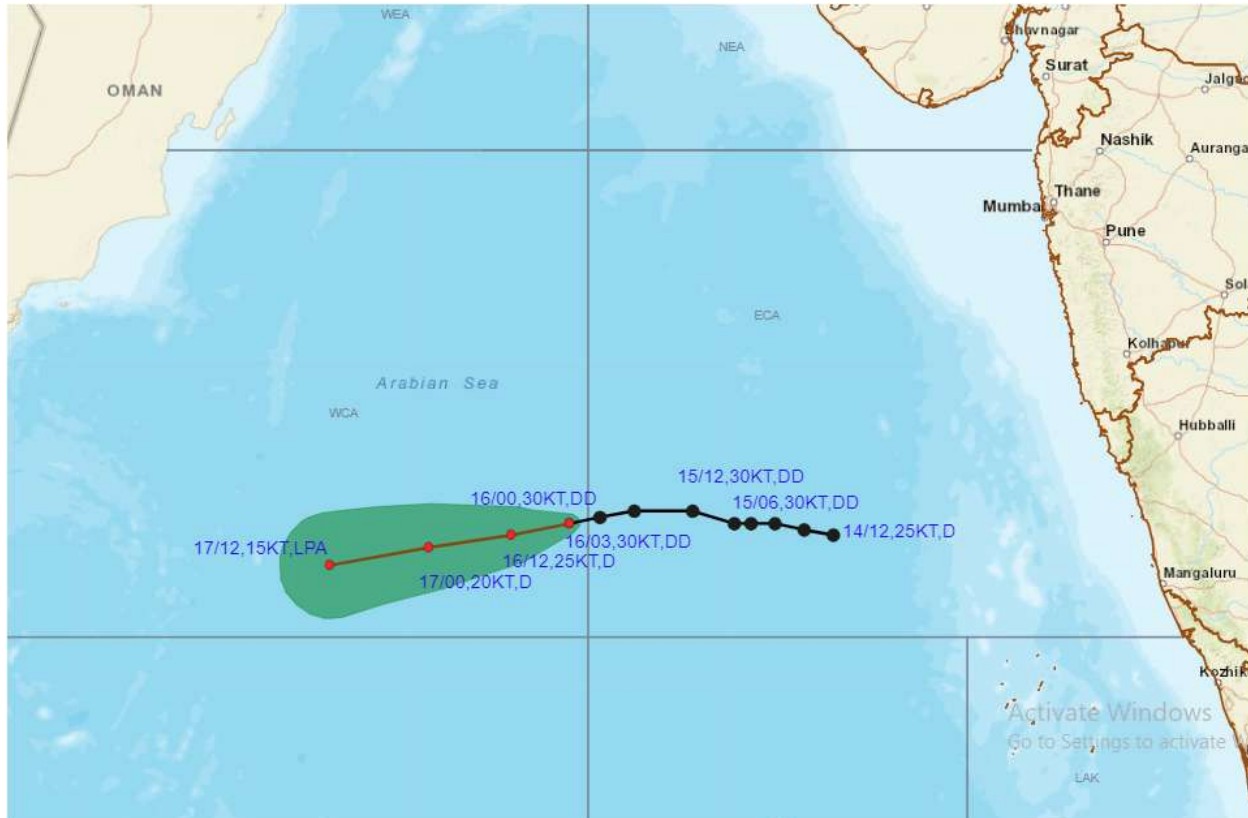
LEGEND: Heavy Rainfall: 64.5 to 115.5mm, **Very Heavy Rainfall:** 115.6 to 204.4mm
Most Places: more than 76% of total stations, **Isolated Places:** Less than 25% of total



LPA: Low Pressure Area



OBSERVED AND FORECAST TRACK OF DEEP DEPRESSION OVER EASTCENTRAL ADJOINING WESTCENTRAL ARABIAN SEA BASED ON 0300 UTC OF 16TH DECEMBER, 2022

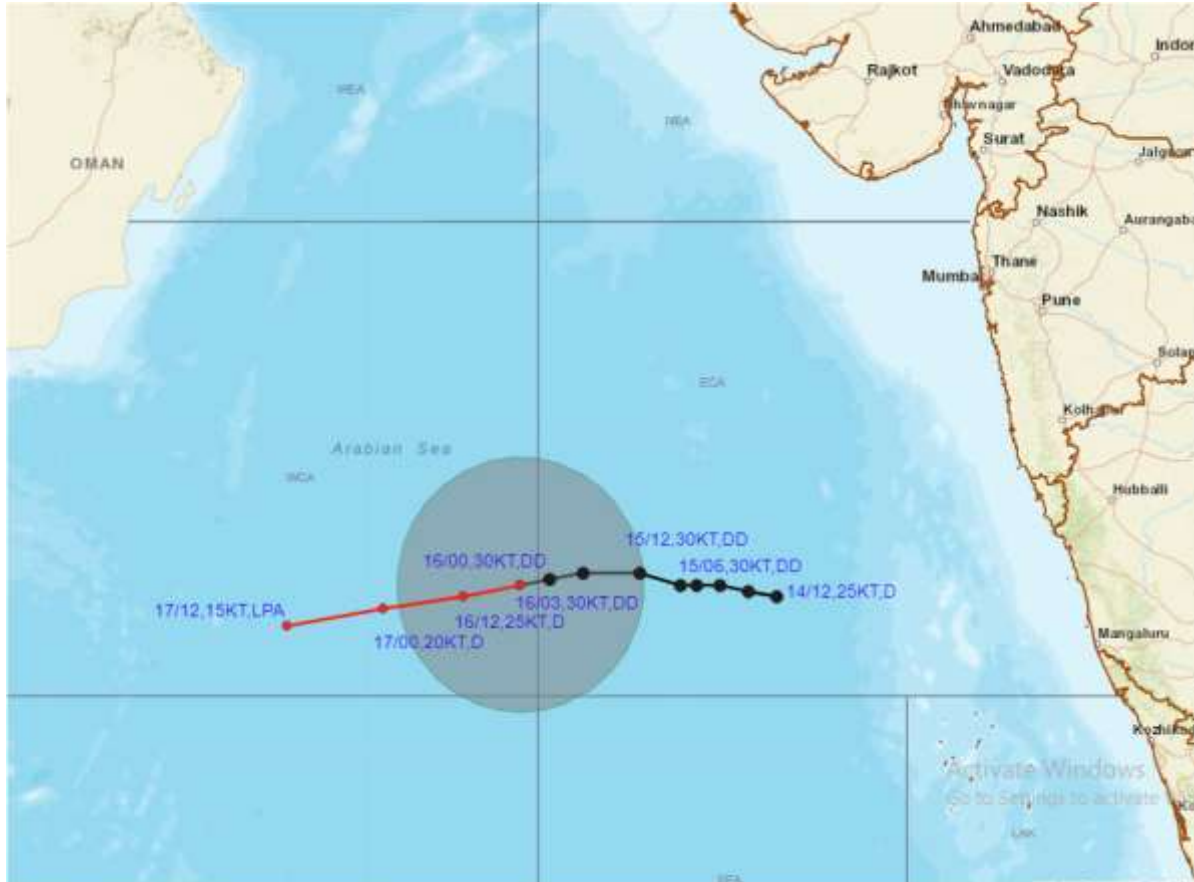


DATE/TIME IN UTC
IST=UTC + 0530
L: LOW PRESSURE AREA
WML: WELL MARKED LOW PRESSURE AREA
D: DEPRESSION (17-27 KT)
DD: DEEP DEPRESSION (28-33 KT)
CS: CYCLONIC STORM (34-47 KT)
SCS: SEVERE CYCLONIC STORM (48-63KT)
VSCS: VERY SEVERE CYCLONIC STORM (64-89 KT)
ESCS: EXTREMELY SEVERE CYCLONIC STORM (90-119 KT)
SuCS: SUPER CYCLONIC STORM (≥ 120 KT)

-  LESS THAN 34 KT
-  34-47 KT
-  ≥ 48 KT
-  OBSERVED TRACK
-  FORECAST TRACK
-  CONE OF UNCERTAINTY



OBSERVED AND FORECAST TRACK ALONGWITH QUADRANT WIND DISTRIBUTION OF DEEP DEPRESSION OVER EASTCENTRAL ADJOINING WESTCENTRAL ARABIAN SEA BASED ON 0300 UTC OF 16TH DECEMBER, 2022



DATE/TIME IN UTC

IST=UTC + 0530

L: LOW PRESSURE AREA

WML: WELL MARKED LOW PRESSURE AREA

D: DEPRESSION (17-27 KT)

DD: DEEP DEPRESSION (28-33 KT)

CS: CYCLONIC STORM (34-47 KT)

SCS: SEVERE CYCLONIC STORM (48-63KT)

VSCS: VERY SEVERE CYCLONIC STORM (64-89 KT)

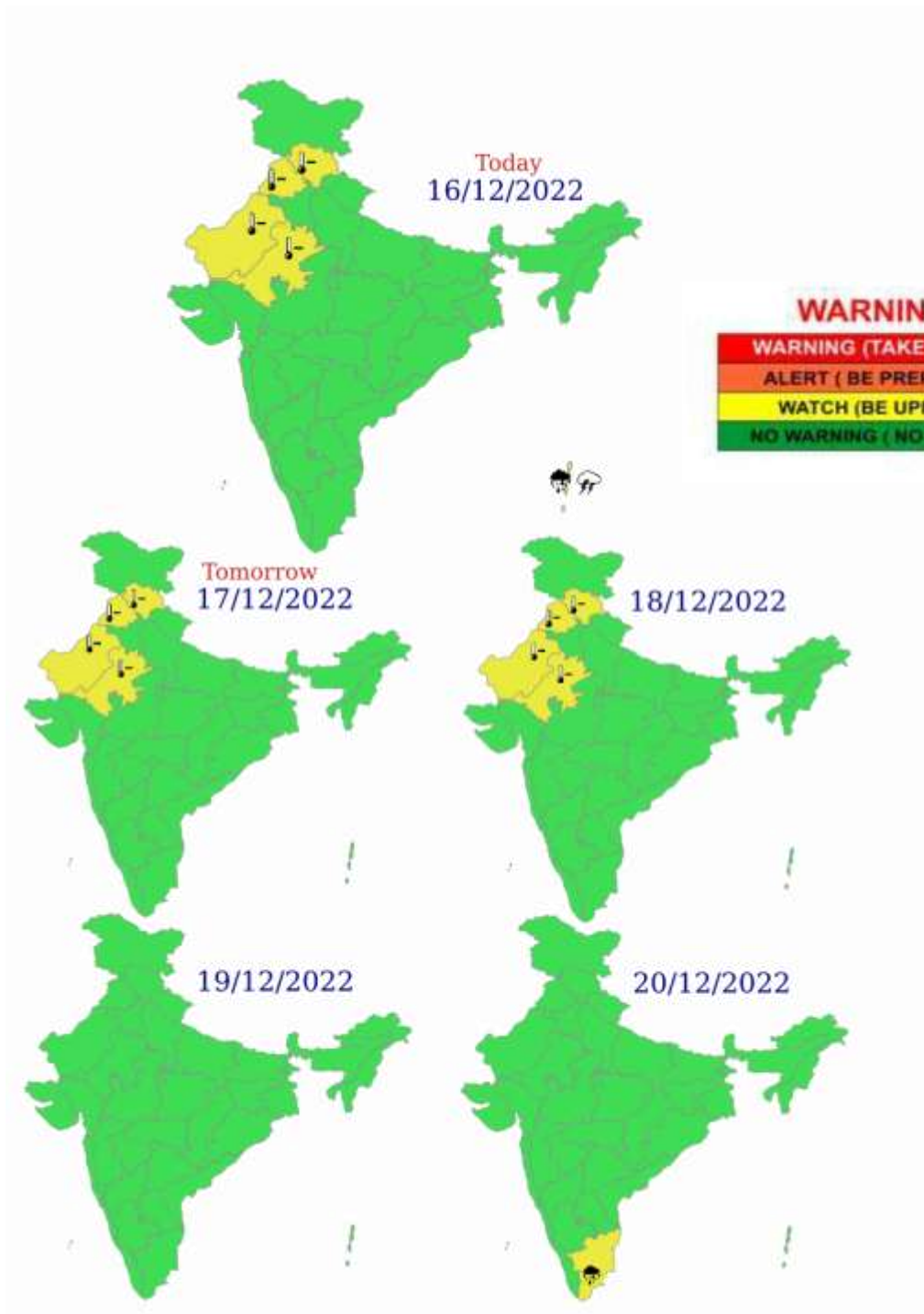
ESCS: EXTREMELY SEVERE CYCLONIC STORM (90-119 KT)

SuCS: SUPER CYCLONIC STORM (≥ 120 KT)

- LESS THAN 34 KT
- 34.47 KT
- ≥ 48 KT
- OBSERVED TRACK
- FORECAST TRACK
- ▲ CONE OF UNCERTAINTY
- AREA OF MAXIMUM SUSTAINED WIND SPEED:
- 28-33 KT (52-61 KMPH)
- 34-49 KT (62-91 KMPH)
- 50-63 KT (92-117 KMPH)
- ≥ 64 KT (≥118 KMPH)

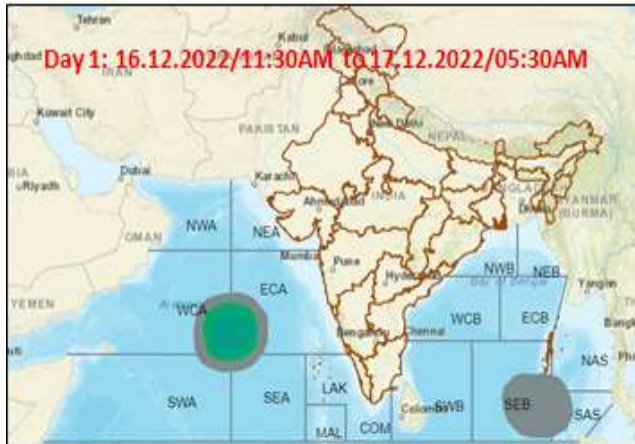
IMPACT OVER THE SEA

MSW (knot/kmph)	Impact	Action
28-33 (52-61)	Very rough seas	Total suspension of fishing operations
34-49 (62-91)	High to very high seas	Total suspension of fishing operations
50-63 (92-117)	Very high seas	Total suspension of fishing operations
≥ 64 (≥118)	Phenomenal	Total suspension of fishing operations



- | | | | |
|--|--|--|--|
|  Heavy Rain |  Heavy Snow |  Thunderstorm |  Dust Storm |
|  Strong Winds |  Visibility |  Cyclone |  Squall/ Hail |
|  Frost |  Cold Wave |  Heat Wave |  Sea State |

Fishermen warning graphics



Squally WX with wind speed 40-45 kmph gusting to 55 kmph
Squally wind speed 45-55 kmph gusting to 65 kmph
Squally wind speed 55-65 kmph gusting to 75 kmph

Fishermen are advised not to venture into the marked areas.